



表面颜色可选：枪黑色

- 开启角度：100度
- 铝框铰杯钻孔尺寸：28毫米
- 材质：铁镀镍
- 铝型材可选用W宽度：19毫米-23毫米
- Opening angle: 100°
- Drilling dimension on aluminum frame hinge head: 28mm
- Material: cold rolled steel, nickel plated
- Range of width of aluminum: 19-23mm

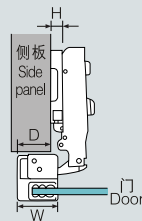
LM05系列内置阻尼自关铰链(两段力)功能图 LM05 Installation dimensions (Two way)

D: 盖位计算值表 Overlay
 W: 铝型材可选用宽度 Range of width of aluminium

LM05A 全盖 Full overlay



$H = -3 + W - D$

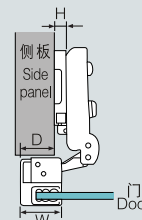


H \ D \ W	19	20	21	22	23
0	16	17	18	19	20
2	14	15	16	17	18
4	12	13	14	15	16

LM05B 半盖 Half overlay



$H = -12 + W - D$

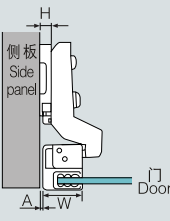


H \ D \ W	19	20	21	22	23
0	7	8	9	10	11
2	5	6	7	8	9
4	3	4	5	6	7

LM05C 内嵌 Insert

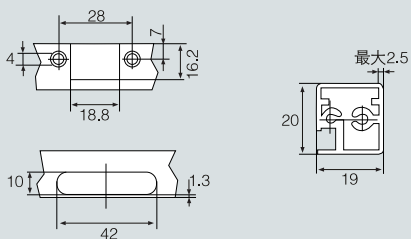


$H = -21 + W + A$

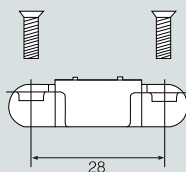


H \ A \ W	19	20	21	22	23
0	2	1	0	-1	-2
2	4	3	2	1	0
4	6	5	4	3	2

铝型材料钻孔尺寸 Drilling size on aluminium profile



铰杯种类 Hinge cup types



可配底座 Plate

序号 No	名称 Item no.	H值 H Value	孔型/安装尺寸L Hole type/Mounting dimension	类型 type
1	M20/M22/M24	H=0/2/4	两孔,two holes/37mm	普通 Normal
2	M40/M42/M44	H=0/2/4	四孔,four holes/37mm	普通 Normal
3				

